



section
for sign
linguistics



UNIVERSITY
OF WARSAW

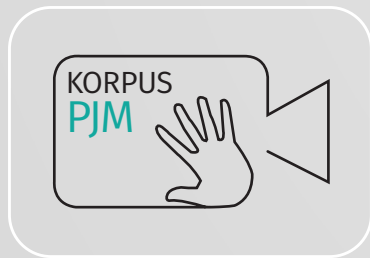
OPEN REPOSITORY OF THE POLISH SIGN LANGUAGE CORPUS: PUBLICATION PROJECT OF THE PJM CORPUS

ANNA KUDER, JOANNA WÓJCICKA,
PIOTR MOSTOWSKI, PAWEŁ RUTKOWSKI

25/06/2022; 10th Workshop on the Representation and Processing of Sign Languages

THE POLISH SIGN LANGUAGE CORPUS PROJECT

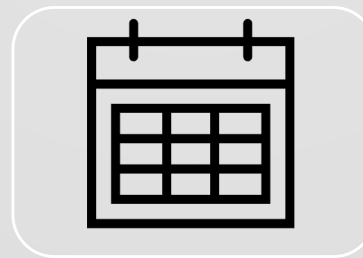
(RUTKOWSKI ET AL., 2017)



Corpus



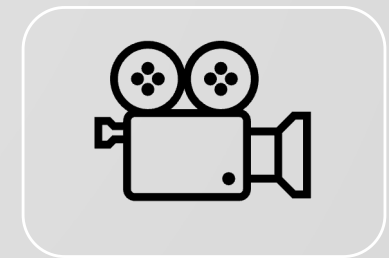
Team



2010-2020

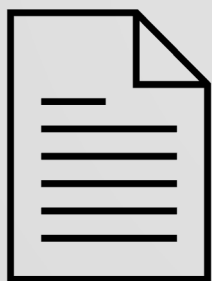


150 Deaf
informants



565h of
recordings

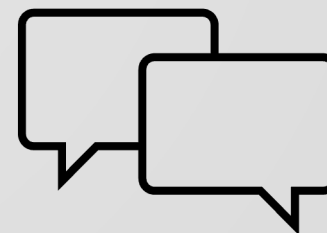
ANNOTATION OF THE PJM CORPUS



687,971 tokens



1,340,536 tags



67,698 sentences
translated

USE OF CORPUS DATA IN VARIOUS PROJECTS

- **Grammatical descriptions** of PJM features: syntax (Rutkowski, Łozińska, 2016); verbs (Łozińska, 2014); negation (Kuder, 2021); gestural elements (Kuder, 2022); mouthing, depicting signs, information structure.
- *The Corpus-based **Dictionary** of Polish Sign Language* (Łacheta et al., 2016);
- *The Signing Brain* – a series of **neurobiological projects** run in collaboration with the Nencki Institute of Experimental Biology (e.g. Banaszekiewicz et al., 2021, Bonna et al., 2020).
- *Sign with Us 1 & 2* – multi-media **PJM courses** (A1-B2 proficiency levels; Filipczak et al., 2017; Filipczak, Mostowski, 2019).
- Adaptations of **textbooks** for pupils with learning difficulties (Rutkowski, Mostowski, 2020).

OPEN REPOSITORY OF THE POLISH SIGN LANGUAGE CORPUS

(WÓJCICKA ET AL., 2020)



OPEN REPOSITORY OF THE POLISH
SIGN LANGUAGE CORPUS



ORP
SLC



www.korpuspjm.uw.edu.pl/en

STEPS LEADING TO THE REPOSITORY PUBLICATION

deciding on
the visual
representation

choosing
material
suitable for
publication

defining
target groups

deciding on
the format of
data
publication



MATERIAL FOR PUBLICATION

EXCLUDED:

- tasks containing sensitive information,
- non-task related productions.

INCLUDED:

- various text-types: narrations, retellings, dialogues,
- the same tasks from all recording sessions.

BALANCED IN TERMS OF INFORMANTS':

- gender,
- age,
- place of origin.

TARGET GROUPS & PUBLICATION FORMATS

casual visitors



fully open access for all
interested parties

**teachers, students,
interpreters,
researchers**



researcher's access
(requiring registration)

PUBLICATION FORMATS – OPEN ACCESS



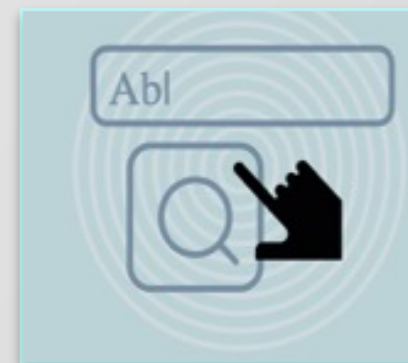
SOCIOLINGUISTIC DATA

birthplace, age, and
gender of the signer



TOPIC OF DISCUSSION

text-types and discussion
topics



POLISH TRANSLATION

word(s) present in written
Polish translations

PUBLICATION FORMATS – RESEARCHER'S ACCESS

Browsing as in the open access.

Access to movie clips and .eaf files featuring tiers for:

- gloss for dominant hand,
- gloss for non-dominant hand,
- HamNoSys transcription,
- free translation into written Polish.



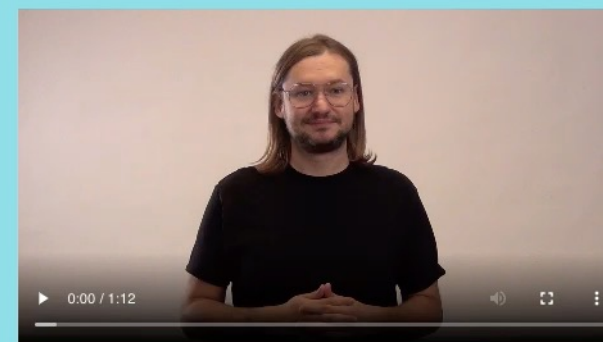
BROWSING BY SOCIOLINGUISTIC DATA

WELCOME TO THE REPOSITORY

This *Open Repository of the Polish Sign Language Corpus* provides access to the extensive collection of sign language video material gathered together by the Section for Sign Linguistics at the Faculty of Polish Studies, University of Warsaw – the first scientific unit in Poland researching sign communication from the perspective of theoretical, comparative and applied linguistics. We hope that this unique dataset will serve as the basis and inspiration for further research into the grammar and lexis of Polish Sign Language (PJM), as well as the culture of Deaf people in Poland. We encourage you to use the recordings collected by our team for scientific and educational purposes, in projects aimed at popularizing knowledge about PJM and at supporting the communication rights of the linguistic minority of the Deaf.

Open Repository of the Polish Sign Language Corpus

Editorial team: Joanna Wójcicka, Anna Kuder, Piotr Mostowski, Paweł Rutkowski



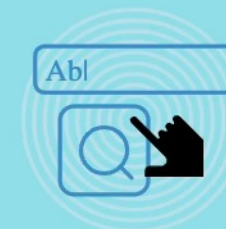
Ways to search the Repository



sociolinguistic data



topic of discussion



Polish translation

INDIVIDUAL VIDEO PAGE

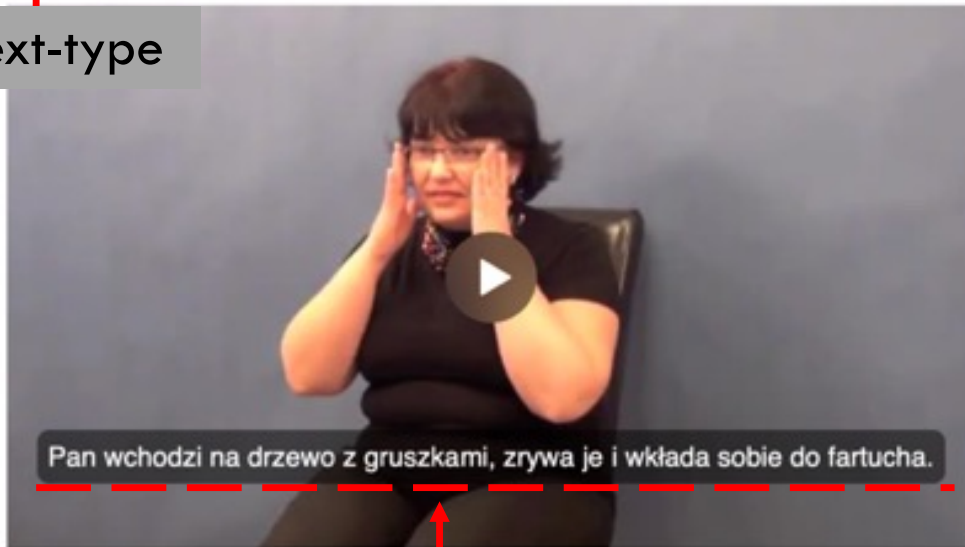
stimulus used to elicit material

Movie details

monolog · film · film aktorski · Pear Stories

task title

text-type



embedded Polish translation

Additional information

Gender	F
Age	32-45
Session number	K26AF15-26
Task number	17
ID	253
Updated at	26 Apr 21:33

corpus coding of session/task

OVERVIEW OF THE REPOSITORY

The project follows publication and annotation standards.

Multiple types of potential users.

The largest archive documenting the language and culture of the Polish Deaf community.

The largest dataset for different types of future research on PJM.

With feedback please contact: anna.kuder@uw.edu.pl

OVERVIEW OF THE REPOSITORY

The project follows publication and annotation standards.

Multiple types of potential users.

The largest archive documenting the language and culture of the Polish Deaf community.

The largest dataset for different types of future research on PJM.

With feedback please contact: anna.kuder@uw.edu.pl

OVERVIEW OF THE REPOSITORY

The project follows publication and annotation standards.

Multiple types of potential users.

The largest archive documenting the language and culture of the Polish Deaf community.

The largest dataset for different types of future research on PJM.

With feedback please contact: anna.kuder@uw.edu.pl

OVERVIEW OF THE REPOSITORY

The project follows publication and annotation standards.

Multiple types of potential users.

The largest archive documenting the language and culture of the Polish Deaf community.

The largest dataset for different types of future research on PJM.

With feedback please contact: anna.kuder@uw.edu.pl

LITERATURE

- Banaszekiewicz, A., Matuszewski, J., Bola, Ł., Szczepanik, M., Kossowski, B., Rutkowski, P., Szwed, M., Emmorey, K., Jednoróg, K., Marchewka, A. (2021). Multimodal imaging of brain reorganization in hearing late learners of sign language. *Human Brain Mapping*, 42(2): 384–397.
- Bonna, K., Finc, K., Zimmermann, M., Bola, L., Mostowski, P., Szul, M., Rutkowski, P., Duch, W., Marchewka, A., Jednoróg, K., Szwed, M. (2020). Early deafness leads to re-shaping of functional connectivity beyond the auditory cortex. *Brain Imaging and Behavior*, 15(3): 1469–1482.
- Filipczak, J., Grabowska-Dobrowolska, M., Limanówka, M. (2017). *Migaj razem z nami. Kurs polskiego języka migowego dla uczniów klas I-III. Część 1-4.* Warszawa: Ministerstwo Edukacji Narodowej.
- Filipczak, J., Mostowski P. (2019). *Migaj razem z nami. Kurs polskiego języka migowego dla uczniów klas IV-VIII. Część 1-4.* Warszawa: Ministerstwo Edukacji Narodowej.
- Kuder, A. (2021). Negation markers in Polish Sign Language (PJM), *Sign Language and Linguistics*, 24(1): 118–131. <https://doi.org/10.1075/sll.00055.kud>
- Kuder, A. (2022). Making Sign Language Corpora Comparable: A Study of Palm-Up and Throw-Away in Polish Sign Language, German Sign Language, and Russian Sign Language. In *Proceedings of the 10th Workshop on the Representation and Processing of Sign Languages: Multilingual Sign Language Resources. Language Resources and Evaluation Conference (LREC 2022), Marseille, France, June.* European Language Resource Association (ELRA).

- Łacheta, J., Czajkowska-Kisil, M., Linde-Usiekniewicz, J. and Rutkowski, P. eds., (2016). The Corpus-based Dictionary of Polish Sign Language, Warsaw: Faculty of Polish Studies, University of Warsaw. <http://www.slownikpjm.uw.edu.pl>.
- Łozińska, S. (2014). Czasownik w polskim języku migowym. Studium semantyczno-gramatyczne [Verb in PJM. Semantic and grammatic analyses]. Unpublished PhD thesis. Warsaw: Faculty of Polish Studies, University of Warsaw.
- Rutkowski, P., Łozińska, S. (2016). Argument Linearization in a Three-Dimensional Grammar: A Typological Perspective on Word Order in Polish Sign Language (PJM), *Journal of Universal Language*, 17(1): 109–134.
- Rutkowski, P., Kuder, A., Filipczak, J., Mostowski, P., Łacheta, J. and Łozińska, S. (2017). The design and compilation of the Polish Sign Language (PJM) Corpus, In P. Rutkowski (ed.), *Different faces of sign language research*. Warsaw: University of Warsaw, Faculty of Polish Studies, 125–151.
- Rutkowski, P., Mostowski, P. (2020). The use of Polish Sign Language (PJM) in bilingual textbooks for deaf students in Polish schools, *The Language Learning Journal*, 48(3):370-383. <https://doi.org/10.1080/09571736.2020.1753910>
- Wójcicka, J., Kuder, A., Mostowski, P. and Rutkowski, P. (2020). Open Repository of the Polish Sign Language Corpus. Warsaw: Faculty of Polish Studies, University of Warsaw. <https://www.korpuspjm.uw.edu.pl/en>



OPEN REPOSITORY OF THE POLISH SIGN LANGUAGE CORPUS

www.korpuspjm.uw.edu.pl/en

