

Project Aim

- Create a Motion Capture (MoCap) data-set for Czech sign language (CSE)
- Data-set primary purpose: sign language synthesis and machine translation
- Proof of concept for large scale motion capture 3D data-set recording

Motion Capture Setup

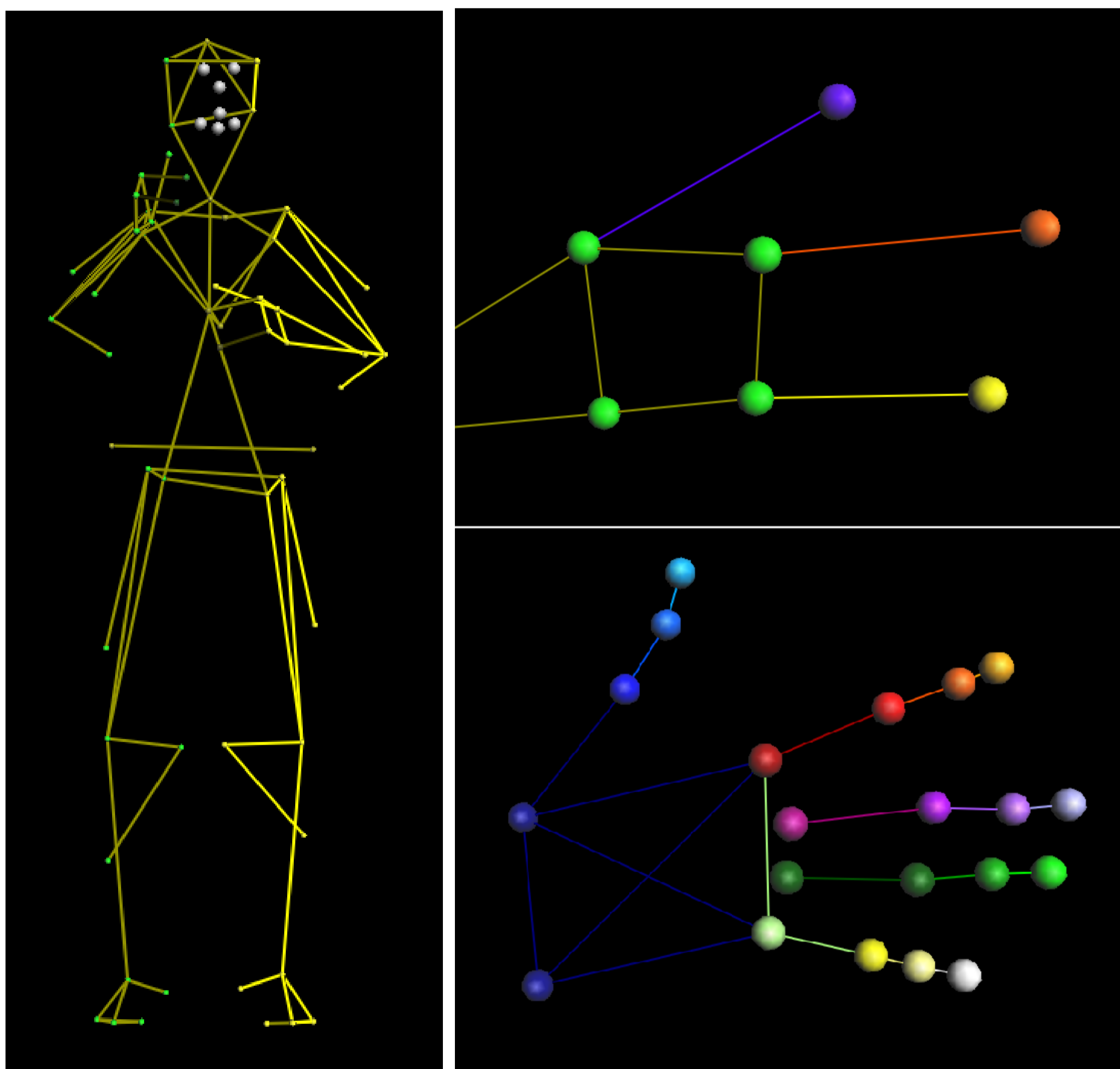
Hardware Specification

- MoCap device: 8x VICON T-20 camera (2MPx, @100fps)
- reference RGB video
- marker sizes: from 4 mm hemispherical (face, fingers) to 14 mm spherical (body)

Two-step Recording Approach

Macroscopic movement recording:

- Movement of body, head, arms, palms.
- Simplified finger setup: 3 markers on fingertips (Thumb, Index, Pinky)
- Simplified facial setup: 2 markers on eyebrows, 4 on mouth, 1 on nose



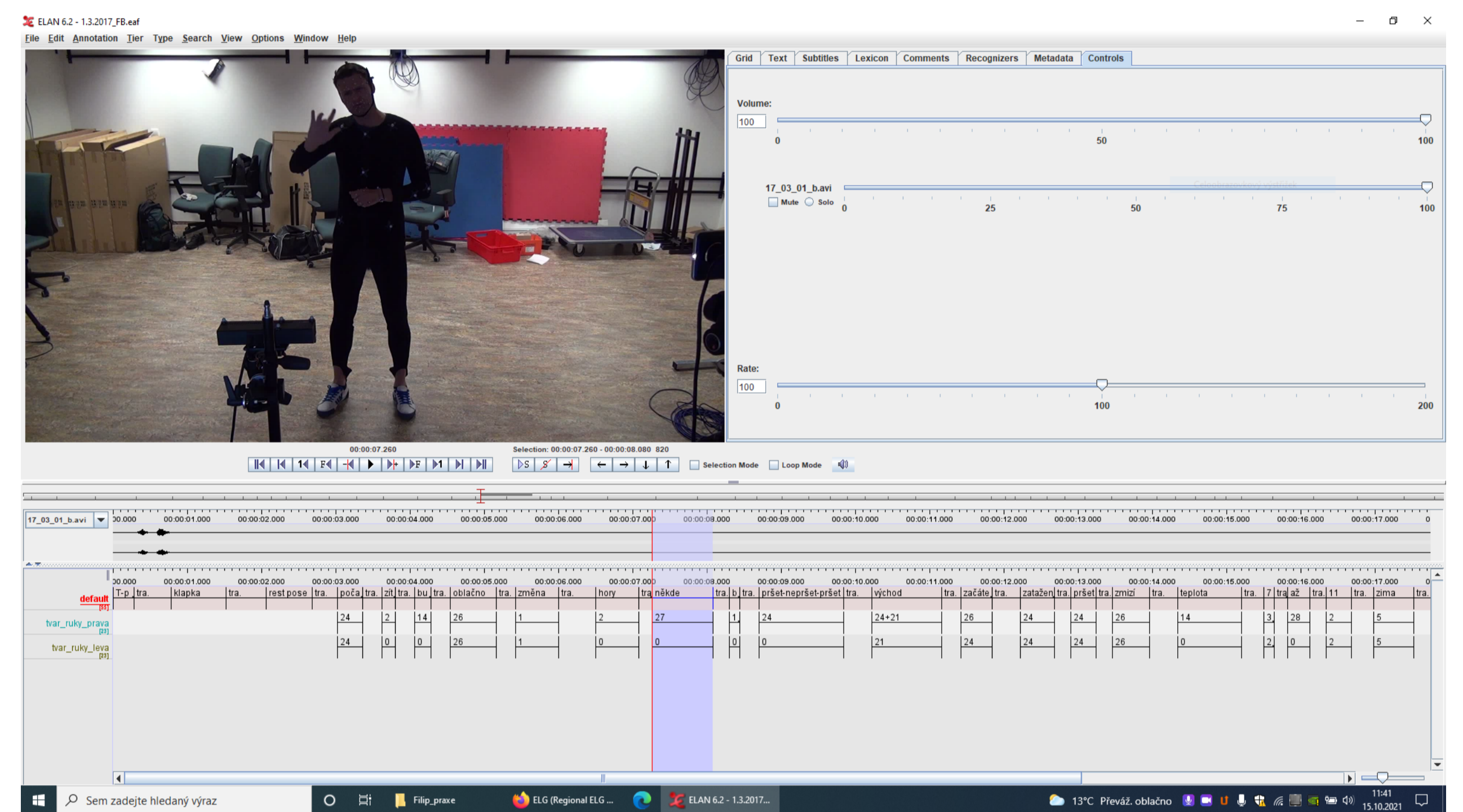
Detailed hand-shape setup:

- 3 markers per finger (fingertip, distal and proximal interphalangeal joints)
- Shares palm tracking with the macroscopic to provide connectivity
- 52 selected hand-configuration recorded
- recording of hand-configuration dynamics (relaxed-configured-relaxed)



Data-set Properties

- Czech Sign Language (CSE)
- Cooperation with CSE linguists - Institute of Special Education Studies, Palacký University Olomouc
- Topics (limited vocabulary): **weather forecast, zoo tour**
- 6 different native CSE speakers (age 18 - 50, 4 males, 2 females)
- Each individual speech is recorded twice by same the SL speaker
- **Linguistic annotation**
 - annotated by CSE native speakers
 - annotations in ELAN [1] based on reference video
 - 3-tier annotation
 - identification of individual signs (glosses)
 - identification of both hand-shapes



Data-sets Details

Topic 1: Weather forecast

- 36 individual forecasts (one forecast ~ 30sec continuous speech)
- Vocabulary diversity (3 forecasts per month)
- Large sample of numbers (temperatures)
- Limited vocabulary - multiple instances of same sign in different context (frequent signs more than 20 repetitions)
- All signs recorded also as dictionary items (separated signs)

Topic 2: Zoo tour

- 20 different animals (one animal ~ 2 - 3min continuous speech)
- 4 chapters:
 - Czech name, Latin name (finger-spelling)
 - Scientific classification, biotope, food (highly structured)
 - lifespan, social (telling / low structured)
 - interesting facts (telling / low structured)
- Large sample of letters (Latin names - finger-spelling)
- Overlapping vocabulary (in highly structured part)
- Contains advanced grammatical structures (in low structured part)

Overall data-set information

- Sign Language 3D motion data-set
- Over 18 hours of continuous speech
- Separate dictionary recorded over 300 signs
- Dynamic hand-configuration recording of 52 shapes
- 6 different speakers
- Data in form of marker trajectories and annotation
- Part of the European Language Grid (ELG)

Acknowledgements

We want to thank staff of Institute of Special Education Studies, Palacký University Olomouc, mainly J. Langer, P. Kučera and J. Grohmannová for their cooperation in signers selection, data elicitation and linguistics support. The work described in this article has received funding from the EU project European Language Grid as one of its pilot projects and the Ministry of Education, Youth and Sports of the Czech Republic, Project No. LM2018101 LINDAT/CLARIAH-CZ. The ELG project has received funding from the European Union's Horizon 2020 research and innovation programme under grant agreement no. 825627.